

HOUSES

213 west 35 street #1300
 new york new york 10001
www.spgarchitects.com
 tel 212 366 5500

[SPG]
 architects

FIRM PROFILE

SPG Architects is a full service award-winning architecture firm founded by Coty Sidnam and currently led by Eric Gartner. SPG provides a comprehensive range of design services and has worked with clients on a broad array of architecture and design projects. Our work includes projects of varying scales and character, with a range of regional, national, and international projects that include single- and multi-family residences, retail environments, corporate interiors, and institutional and hospitality buildings and spaces.

Corporate clients have included a wide range of fashion and design companies, as well as traditional and new media companies. Residences include numerous co-op and condominium apartments, urban townhouses, second homes, free-standing houses, and residential compounds throughout the United States and Latin America. Although the clients are diverse, they are united in their desire for architecture that is well conceived and well executed by a team of thoughtful and energetic design professionals.

Working in the modernist tradition, SPG employs a sense of “critical regionalism” to what originated as an International Style of forward looking architecture. This approach applies sustainable solutions and locally relevant construction technologies and materials to create unique client and site driven solutions.

SPG Architects’ modernist approach to design allows for the various functions of a space to be organized and expressed, while eliminating the cacophony of the untended environment. Architectural ideas are drawn from the project site and the client’s needs and desires. These then are expressed through manipulations of form and light. An interest in up-to-date building technologies, natural and man-made construction materials, and a constantly developing approach to sustainable design strategies further inform our designs. SPG’s work clearly presents a visual consistency based on human proportions, the exploration of light, and the judicious use of materials that provide singular tactile, visual, spatial and temporal experiences.

Eric A. Gartner, AIA, LEED AP

As SPG’s principal partner, Eric has been practicing architecture since obtaining his Master of Architecture degree from the University of Virginia, where he also received his undergraduate degree. He maintains an active relationship with UVA, having long served on the School of Architecture’s Foundation Board, and he regularly serves as a visiting design critic for student reviews at numerous schools of architecture. At SPG, Eric has broadened the firm’s range of project types and helped it expand its national and international presence. SPG Architects’ built work is now located not only across the US but also in Latin America and Africa, and it has been published worldwide. Eric’s ongoing commitment to both environmental and social responsibility has instigated and informed a series of projects that explore the benefits of sustainable design. Eric continues working as the design architect for the Kageno Worldwide community development project in Banda, Rwanda, and a new school in Kenya. For the firm’s private client base, Eric continues to explore the relationship between local environments & building traditions and modern technologies & architectural expression. Eric is a member of the American Institute of Architects, is registered with the National Council of Architectural Registration Boards, through which he is licensed in numerous states, and is a LEED Accredited Professional.

 [SPG Architects Full Portfolio](#)

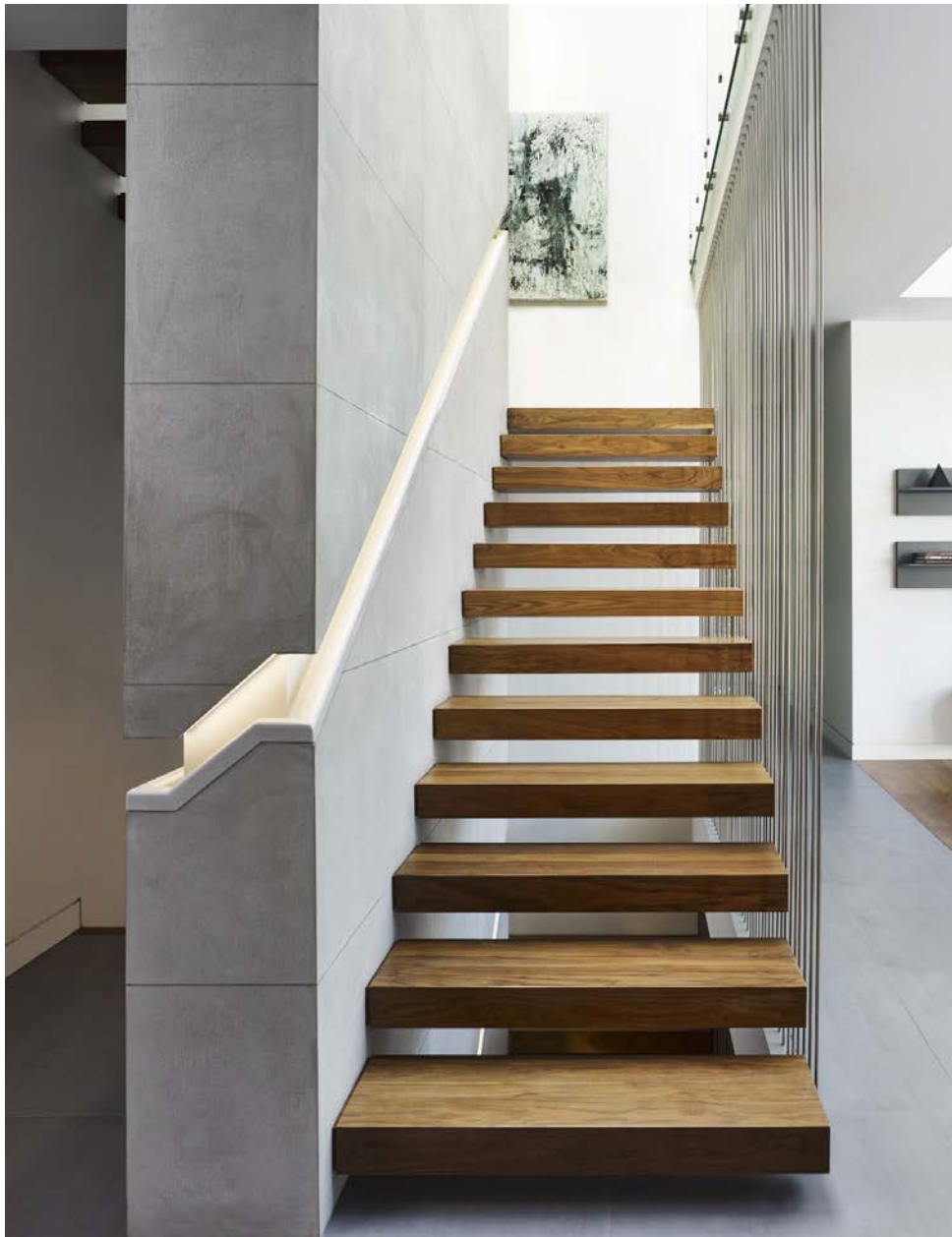


MAMARONECK HOUSE

Mamaroneck, NY

Sitting on a wooded Westchester County site, this 5500 SF house consists of a large kitchen, dining and living rooms, a study, a large primary suite, a family room, and four additional bedrooms. The 3000 SF conditioned basement incorporates a children's play area, a media center, and a small gym. A 3-car garage rounds out the program. The formally composed street facade presents itself frontally to the street but addresses the driveway with a dynamic entrance canopy. The rear façade is animated with more dynamic relationships between indoor and outdoor living spaces. This side of the house is defined by a double-volume transparent cube and several more solid volumes that provide a more ambiguous relationship between indoors and out. A free-standing dining pavilion further blurs this distinction. The house is rendered in a minimal architectural vocabulary of stucco, wood screens & cladding, grey tiles & plaster, stainless steel, and walnut floors & millwork. Natural light and shadow are purposefully manipulated with the large planar openings, while the exterior façade is dappled and softened by tree-filtered daylight.

[SPG]
architects



Honors
 2020 The Plan Magazine Awards - Houses: Finalist
 2018 The Plan Magazine's Best House Awards: Shortlisted
 2018 Westchester Home Magazine: Readers' Choice for Best Whole House Architecture
 2018 Westchester Home Magazine: Editor's Award for Best Modern Architecture
 2018 Westchester Home Magazine: Best Whole House Architecture



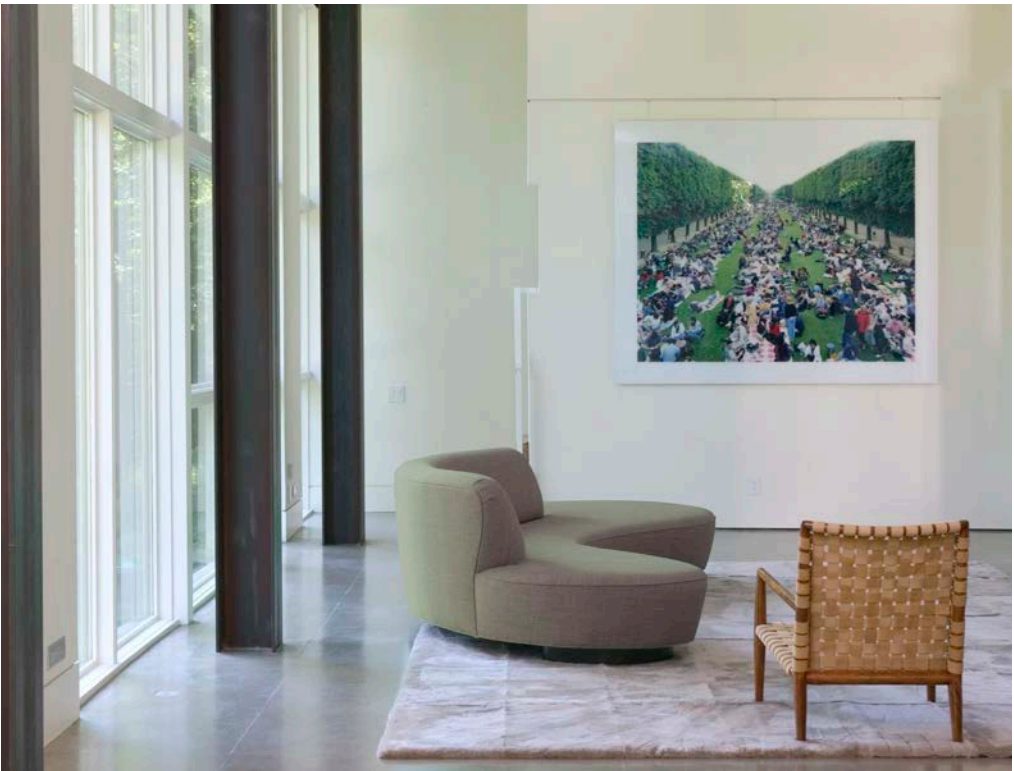


PAWLING RESIDENCE

Pawling, NY

This 3,330 SF weekend getaway provides a private refuge for a New York City couple. The house sits on 5 semi-private acres. Its pavilion-like form nestles into a rise in the landscape allowing for the 2-story bedroom zone to seamlessly link with the main living areas, which contain living, dining, and kitchen functions. A dining terrace and a private primary suite garden are defined as exterior rooms by concrete half walls that are extensions of the main house form. The gestural roofline slopes upward from the closed front facade to the more open rear facade and provides a sense of soaring relief as the occupant moves from the entry court to the expansive views beyond.

[SPG]
architects



PECONIC BAY HOUSE
Southampton, NY

This 5,000 SF 5-bedroom house on the Hamptons' Peconic Bay is composed of two rectilinear wings that open toward the water with large expanses of glass. Unifying the two wings is the central entry and vertical circulation core that contrasts with the horizontality of the main living areas. The 2-story form is designed with thoughtful consideration for cost-effective construction through the use of artfully sited simple forms. A gentle but high bluff raises the structure above the flood plane, and the majority of the wooded site remains untouched. The use of architectural and planting screens extend the sense of enclosure and unify the house structure with the site by extending the lines of the house into the landscape. The seaside locale inspires the house's material palette, consisting of natural greys, beiges, and taupes. The exterior is punctuated by bronze-colored windows and an eye-catching entry canopy.

Honors
2018 AIA Long Island Chapter Archi Awards – Commendation Award
2016 AIA New York Chapter Design Exhibition

[SPG]
architects





LEICESTER HOUSE

Asheville (Leicester), NC

This hilltop residence, located at the edge of a wooded knoll in the foothills of the Blue Ridge Mountains, has expansive southern and western views. Approaching through the woods, one arrives at a one-story facade of corten steel framed by wood. A hint of the views is provided through the glass door, but it is not until entry that the full impact of the hilltop views can be experienced. The south and west glass walls open to rolling farmland below and the mountains beyond. The entry level serves as the primary living area, with a guest wing carved into the hilltop below. The house is functional, energy efficient and visually inspiring. The 'greening' of the house complements its visual warmth, grounding the modern structure in its rural landscape.

[SPG]
architects



Honors
2014 Matsumoto Awards: 2nd place award for best modern residential architecture in the state of NC
2013 Trends Magazine: Top 50 American Homes Award
2012 Matsumoto Prize Nominee
2012 Marvin Windows and Doors: International Challenge Award
2011 Society of American Registered Architects, NY Chapter: Honor Award, Housing
2010 Interior Design Magazine: Best of Year Merit Award, Vacation House
2009 Western North Carolina Green Building Council: Best in Regional Green Design





HISTORIC PROPERTY RENOVATIONS

Westchester County, NY

Our clients purchased an 18th century farmhouse in historic Bedford NY, as well as the adjacent 19th century timber-framed barn. SPG was called upon to renovate and add to both building to create a full-time home for their family. While the main house on the property serves most of the family's needs, the barn, with it's larger and more dramatic open spaces, provides the opportunity for supplemental and larger gatherings. The original 1150 SF historic structure was preserved, structurally stabilized and weatherized. A small 400 SF addition with large glass expanses brings in natural light, and connects the interior with the bucolic setting, while purposefully distinguishing itself from the original historic barn. Together the original structure and addition accommodate a large seating & media center, a large dining area, and a billiards room. In addition, a custom glass and steel 1000 bottle wine cellar a provides dramatic focus for the interior, with interiors that recall but fully enhance the original structure and provide a visual union between old and new.

Honors
2024 AIA Westchester Hudson Valley Design Awards – Citation Award - Historic Restoration, Adaptive Reuse.

[SPG]
architects





STAMFORD CT HOUSE Stamford, CT

This Connecticut residence serves as the new home for a young family of six. It replaces the more modest mid-century home which previously occupied the site. By maintaining large portions of the foundation and garage structure, it qualifies as a renovation albeit a significant one that completely transformed the house.

Sited on 2 acres, the front of the house presents what seems to be a one and one-half story facade and addresses the neighborhood streets in a mannerly way. The rear of the house opens with generous walls of windows to the yard and nature preserve, creating an exhilarating relationship between interior and exterior spaces. SPG Architects provided both architectural and interior design services for this project.

Honors
 2007 Home Builders Association of Connecticut: Connecticut Best Custom Home

[SPG]
architects





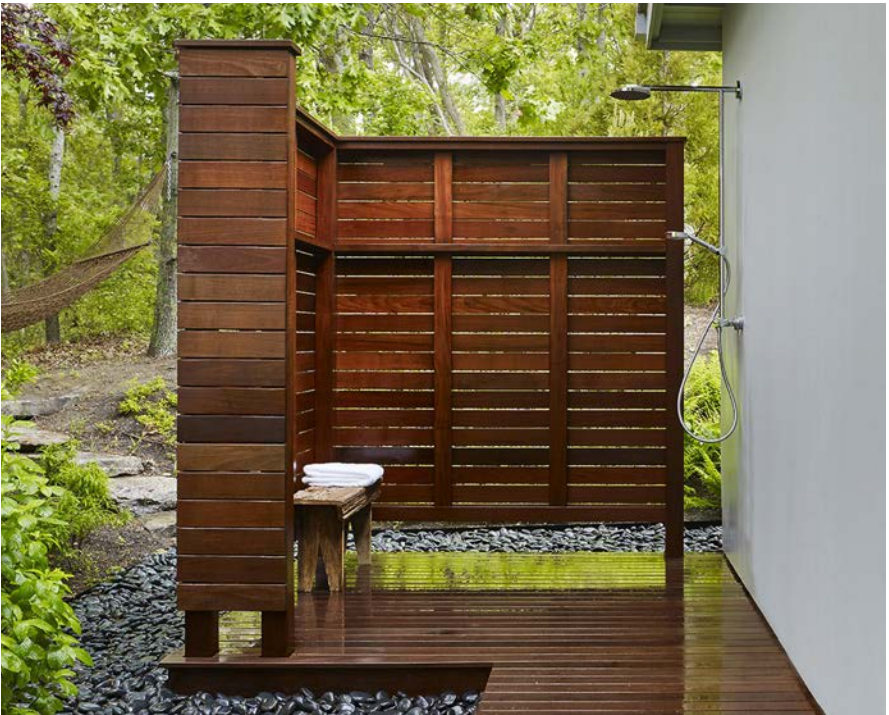
POND HOUSE

Cape Cod, MA

When our client purchased this property, it was the first time that this mid-century gem had changed hands since it was originally built. The house is distinguished as one of a number of classic but modest modern vacation and weekend houses designed for the Cape Cod landscape of kettle ponds and woods during the 40's, 50's and 60's. It meshes a classic modern form with a tiny fishing cabin built decades earlier. Perched on a rise overlooking a pond, the bones were perfect but the house needed numerous improvements to make the building physically sound again. Siding, roofing, gutters, insulation, upgraded windows & doors, and mechanical systems were all replaced to bring it up to date and to sustain it well into this new century. SPG Architects brightened and refreshed the house to compliment and enhance its already open and airy feel, but without losing sight of the spirit, intention, or architectonics of the original residence.

Honors
2019 PRISM Awards: Cape Associates wins Gold for Best Remodeling/Restoration
2019 Docomomo Modernism in America Awards: Citation of Merit Award
2016 Interior Design: Best of Year Honoree for Best Residential Renovation/Restoration
2015 NY AIA Award: Interiors Committee

[SPG]
architects





BEACH WALK HOUSE

Fire Island, NY

This Fire Island house is located directly behind beach-front dunes. The strict requirements of both FEMA and local codes regarding height, lot line, setbacks, and site coverage; the proximity of neighbors; and very specific view corridors all presented a host of challenges. Our response was to create a dynamic composition of three intersecting rectilinear forms, which is rotated on the site off the prevailing grid. This decision maximized both views and privacy. The volume at grade is delineated by dark, vertically slatted, wood breakaway walls, which obscure the support pilings and provide storage for water sports equipment. The center volume, clad in horizontal wood siding, houses bedrooms & baths and provides roof decks for the living level. The metallic clad upper volume contains a large, open-plan living space with spectacular water views.

Honors
2012 Society of American Registered Architects, NY Chapter: Award of Excellence, Housing

[SPG]
architects





CASA TORCIDA

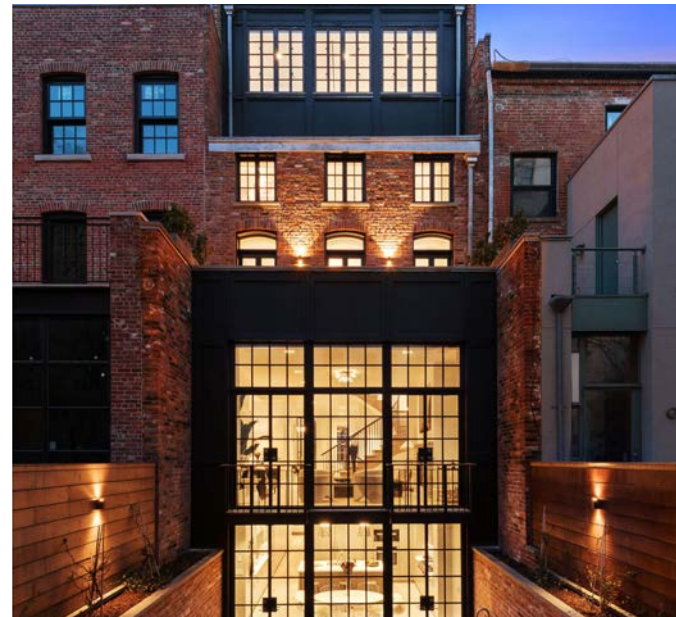
Osa Peninsula, Costa Rica

SPG Architects transformed an abandoned steel frame and concrete slab structure into a five-level, 18000 SF, indoor-outdoor residence on a rain-forested mountainside overlooking the Golfo Dulce. The house is environmentally sensitive, technologically advanced, and modernist by design. A flexible building perimeter provides a seamless flow from inside to out that completely blends the built environment with the natural setting and the spectacular views. The off-the-grid house is energy self-sufficient – appliances and lighting were chosen for low power consumption that is sourced by photovoltaic cells on the roof. Solar hot water panels provide domestic hot water. Maximized cross ventilation and ample overhangs have eliminated the need for air conditioning in this year-round tropical climate. As a result, this house is an indigenous yet distinctly modern piece of architecture.

Honors
2012 Society of American Registered Architects, NY Chapter: Honor Award, Sustainable Design

[SPG]
architects





OTHER PROJECTS | MODULAR DESIGN

Modular Construction offers opportunities to address important issues in the residential building marketplace, including scheduling, affordability, and sustainability issues, all of which impact financial and resiliency concerns in this segment of the built environment. SPG Architects has developed a wealth of knowledge and relationships in the modular building realm that could benefit clients, owners, builders and developers address market concerns without sacrificing the heightened design sensibilities that SPG always brings to the table.

[SPG]
architects

OTHER PROJECTS | COMMERCIAL

Since the firm's inception, SPG has worked with a range of clients seeking innovative and well-considered commercial projects. SPG has successfully brought thoughtful, well-executed designs to completion for our retail, hospitality, and corporate interior clients, including nationally recognized and boutique brands serving domestic and international markets. Innovative and cost-effective problem-solving coupled with brand creation and recognition give each of these projects a distinctive and memorable presence.

[SPG]
architects