



MODULAR

213 west 35 street #1300
new york new york 10001
www . spgarchitects . com
tel 212 366 5500

[SPG]
architects

FIRM PROFILE

SPG Architects is a full service award-winning architecture firm founded by Coty Sidnam and currently led by Eric Gartner. SPG provides a comprehensive range of design services and has worked with clients on a broad array of architecture and design projects. Our work includes projects of varying scales and character, with a range of regional, national, and international projects that include single- and multi-family residences, retail environments, corporate interiors, and institutional and hospitality buildings and spaces.

Corporate clients have included a wide range of fashion and design companies, as well as traditional and new media companies. Residences include numerous co-op and condominium apartments, urban townhouses, second homes, free-standing houses, and residential compounds throughout the United States and Latin America. Although the clients are diverse, they are united in their desire for architecture that is well conceived and well executed by a team of thoughtful and energetic design professionals.

Working in the modernist tradition, SPG employs a sense of “critical regionalism” to what originated as an International Style of forward looking architecture. This approach applies sustainable solutions and locally relevant construction technologies and materials to create unique client and site driven solutions.

SPG Architects’ modernist approach to design allows for the various functions of a space to be organized and expressed, while eliminating the cacophony of the untended environment. Architectural ideas are drawn from the project site and the client’s needs and desires. These then are expressed through manipulations of form and light. An interest in up-to-date building technologies, natural and man-made construction materials, and a constantly developing approach to sustainable design strategies further inform our designs. SPG’s work clearly presents a visual consistency based on human proportions, the exploration of light, and the judicious use of materials that provide singular tactile, visual, spatial and temporal experiences.

Eric A. Gartner, AIA, LEED AP

As SPG’s principal partner, Eric has been practicing architecture since obtaining his Master of Architecture degree from the University of Virginia, where he also received his undergraduate degree. He maintains an active relationship with UVA, having long served on the School of Architecture’s Foundation Board, and he regularly serves as a visiting design critic for student reviews at numerous schools of architecture. At SPG, Eric has broadened the firm’s range of project types and helped it expand its national and international presence. SPG Architects’ built work is now located not only across the US but also in Latin America and Africa, and it has been published worldwide. Eric’s ongoing commitment to both environmental and social responsibility has instigated and informed a series of projects that explore the benefits of sustainable design. Eric continues working as the design architect for the Kageno Worldwide community development project in Banda, Rwanda, and a new school in Kenya. For the firm’s private client base, Eric continues to explore the relationship between local environments & building traditions and modern technologies & architectural expression. Eric is a member of the American Institute of Architects, is registered with the National Council of Architectural Registration Boards, through which he is licensed in numerous states, and is a LEED Accredited Professional.

 [SPG Architects Full Portfolio](#)

[S P G]
architects



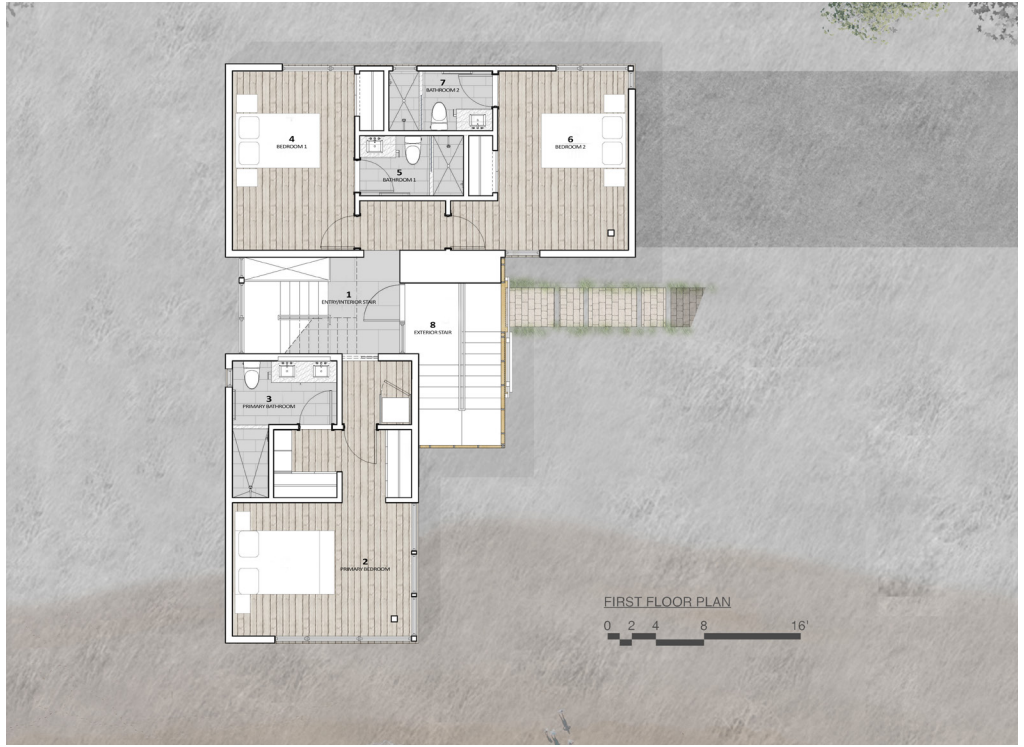
COASTAL MODULAR

This three-bedroom vacation home is a study in spatial efficiency, coming in under 1,750 SF of living area including 2,050 SF of modular construction and under 100 SF of site-built construction. The design can be adapted to any site of the owners choosing. The two-story factory-built modular house has a reversed living plan to maximize available terraces and views for the primary family kitchen, dining and living areas, while tucking two bedrooms and a primary suite into the lower level. Conceived specifically to touch lightly on the landscape both during and after construction, this home is ideal for flood-prone areas. The modular house is comprised of two living volumes that are joined by a prefabricated entrance staircase that provides an immediate visual and physical connection to the upper level. Each volume is composed of two stacked modular units raised on pilotis. This allows the landscape to move through and under the house, providing an environmentally sensitive and visually dramatic design solution.

Publications
August 2019 Inspirations Award Winners article printed and digital
2018 The Plan Journal: "Modular Housing Coastal Typological Prototype".

Awards
2019 Contract Magazine Inspirations Awards: Honorable Mention

[SPG]
architects

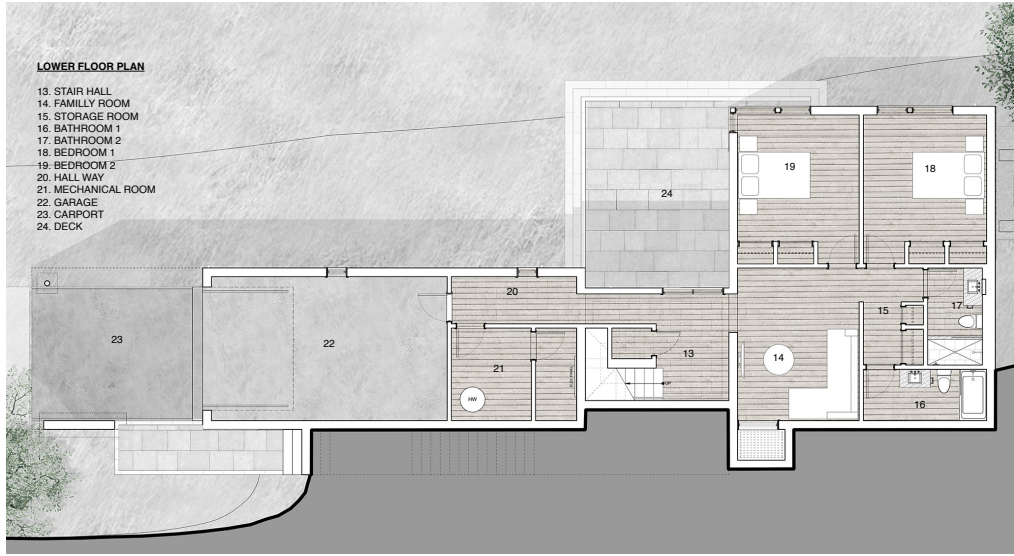
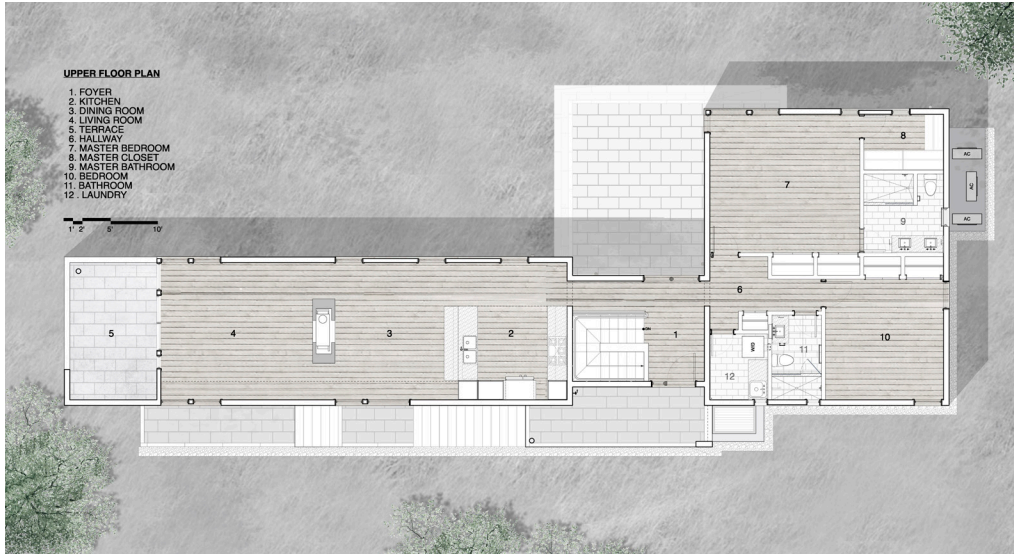




YARDLEY MODULAR

This 3,240 SF modular design is conceived as a primary residence, with an upper level that includes a gracious entry hall, an kitchen, living and dining area with fireplace and a primary bedroom wing that could include either a home office or a guest bedroom. The lower level included marking and mechanical spaces as well as a bedroom wing with two bedrooms and two baths and a media or play room.

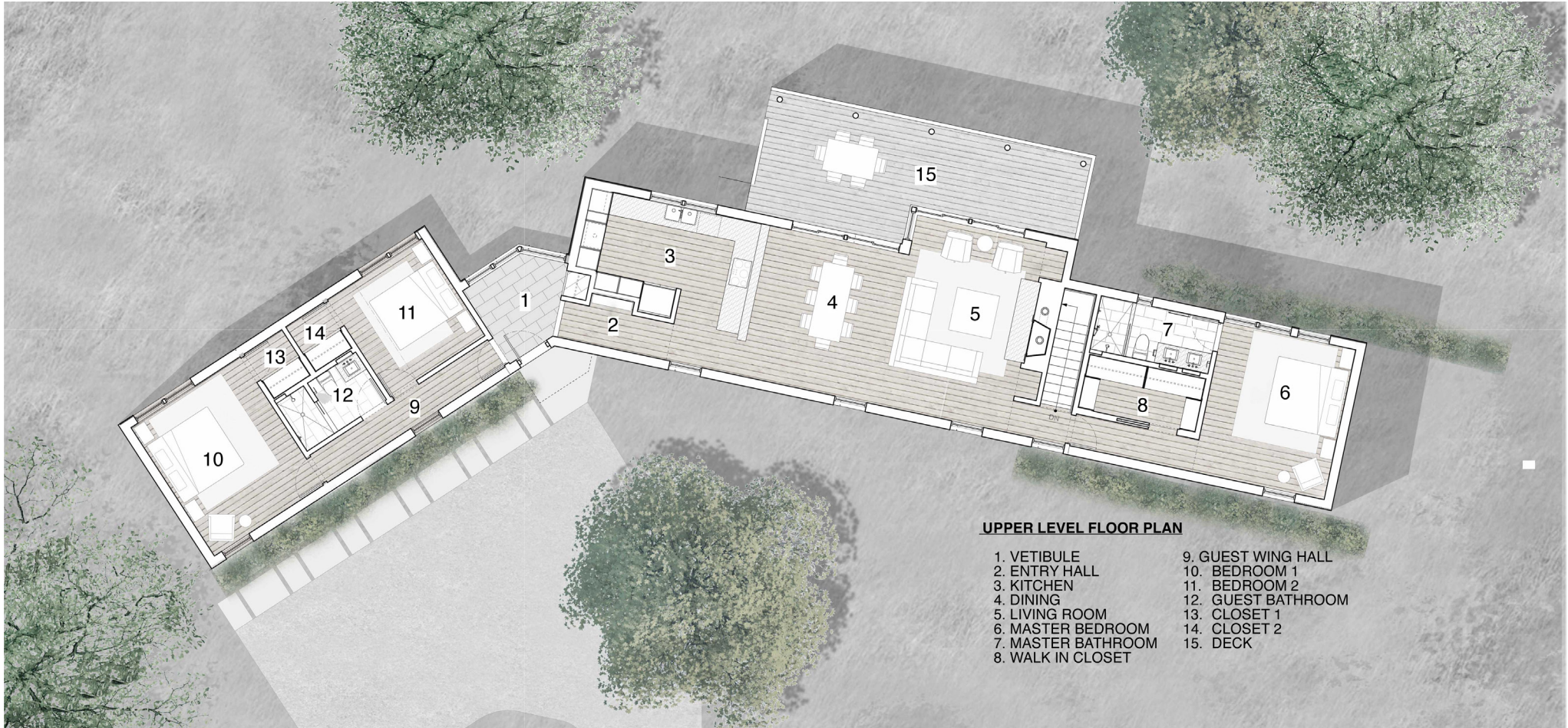
[SPG]
architects





ALBEMARLE MODULAR

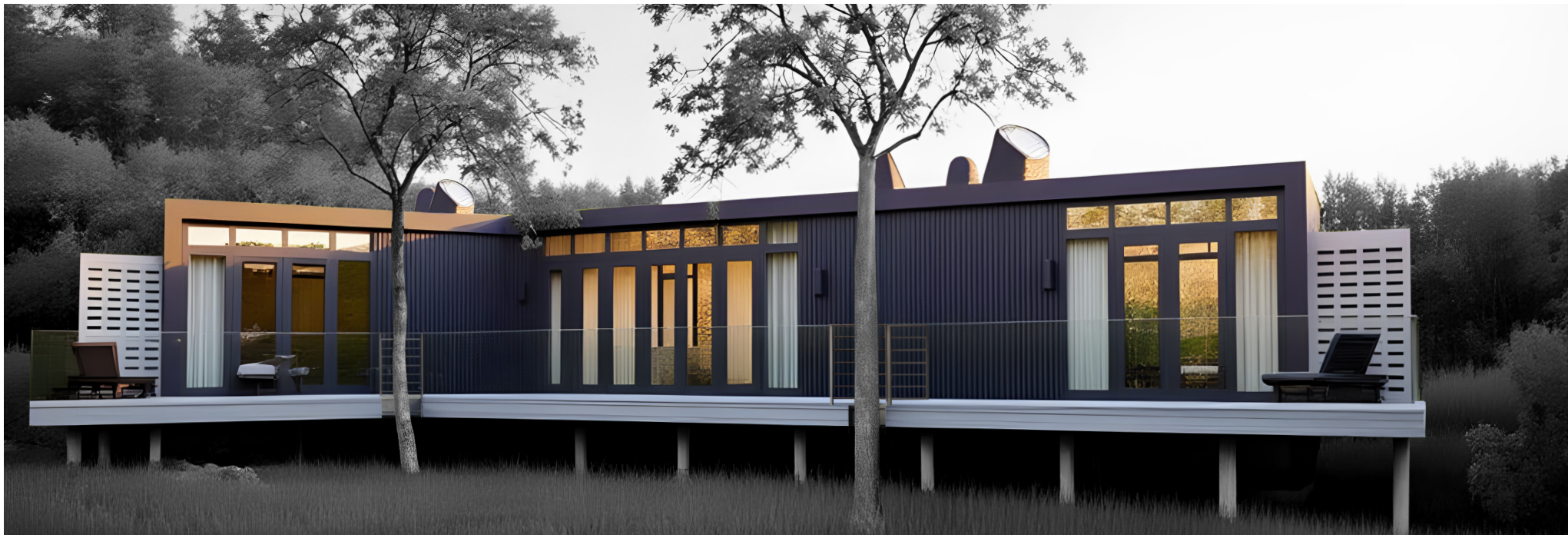
This 2,750 SF house was designed as a hybrid of a modular box units and pre-fabricated panelized construction. Located on a sloping site, the 3-module upper level includes the entry vestibule with an open kitchen, dining, living room and the primary bedroom suite to the right, and to the left, a 2 Bedroom wing. The western facing facade has a two-story porch with deck and pergola that provides an outdoor extension of the living areas, simultaneously providing protection from excessive solar heat gain on a facade that is defined by extensive windows to take in the expansive views across the rolling agricultural and natural landscape beyond. Exterior materials include corten steel panels on the upper level, and exposed concrete panels on the lower level.





BOONE MODULAR

This small-living modular house was designed as a modestly priced, easy to take care of get-away home. The concept includes a small kitchen, two full bedroom suites and large outdoor decks for comfortable indoor / outdoor living. The original plan included here has alternate variations that provide additional bedrooms for small families and an expanded living area that provides for a comfortable indoor dining area. However, the small but comfortably conceived 1,200 SF of this model is meant to provide affordable high-design for the budget conscious but discerning owner.





ASHEVILLE MODULAR

This three bedroom home is conceived as a primary or second home designed for a hilly site. The house is a study in spatial efficiency, coming in under 1,750 SF of living area including 2,050 SF of modular construction and under 100 SF of site-built construction. The design can be adapted to any site of the owners choosing. The two-story factory-built modular house has a reversed living plan to maximize available terraces and views for the primary family kitchen, dining and living areas, while tucking two bedrooms and a primary suite into the lower level. A steeper site such as the one shown here can sit on a pre-fabricated panelized foundation system with extra interior space integrated into the slope so that a larger family can fully enjoy a separate living area that still enjoys plentiful light and access to the outdoors. Additionally, different siding options are available, allowing for a customized look that can suite a variety of modern expressions.



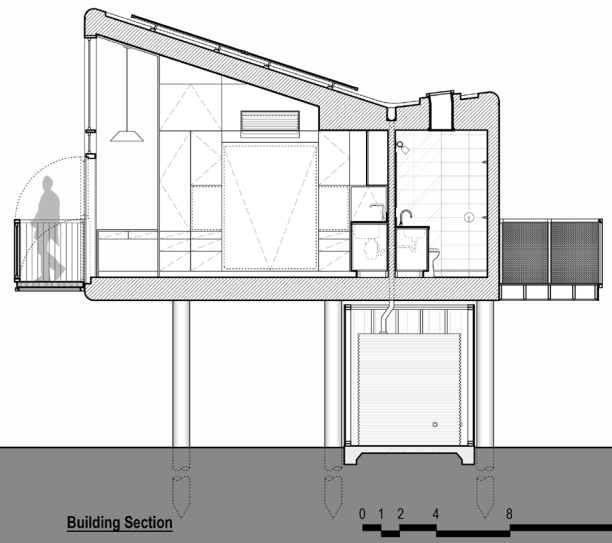
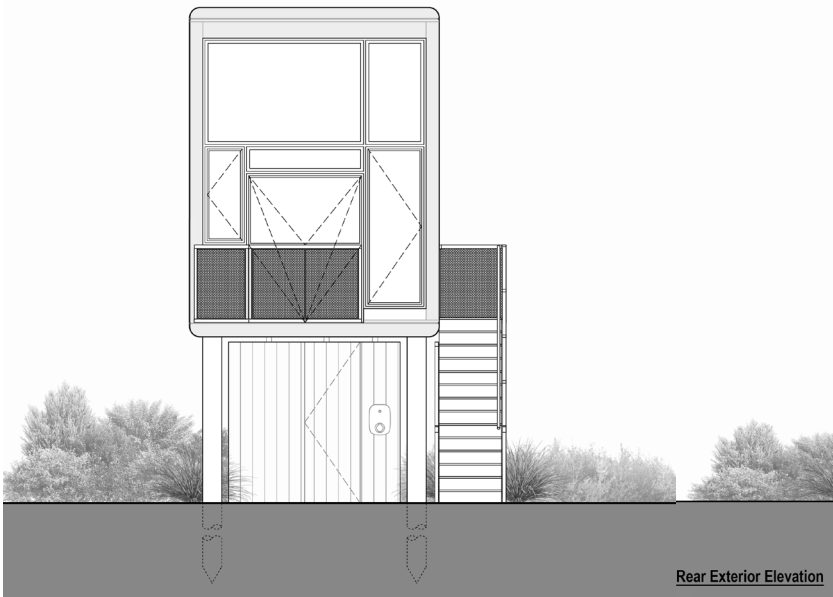


ELEVATED MICROHOME

The worldwide crises of housing availability and climate change have shaped the form and disposition of this micro-house, which is designed as an efficient and comfortable home. The prefabricated nature of this house's building systems allows for the cost-effective and timely assembly of this tiny living unit, which can be grouped into larger community-oriented housing clusters. The total interior square footage of each unit is limited to 25 square meters (269 SF), and it includes the small interior living area with a retractable bed, ample built-in storage, a kitchenette, and a comfortable bathroom, providing the essential comforts of life in a light-filled volumetric interior. The elevated living plane creates a non-conditioned exterior space, which limits the house's impact on the landscape and affords protection from coastal and waterway flooding while bringing a sense of privacy. This plane also introduces a protected but above-ground water-collection system, mechanical equipment, and a small, enclosed storage area behind breakaway walls. An optional fold-out balcony allows additional natural cross-ventilation, and the rooftop photovoltaic system provides much of the home's power.

These environmental considerations, prefabricated building components, and efficient interior plan-making shape this home's form and appearance while providing affordable and comfortable small-living accommodations.

[SPG]
architects



Rear Exterior Elevation

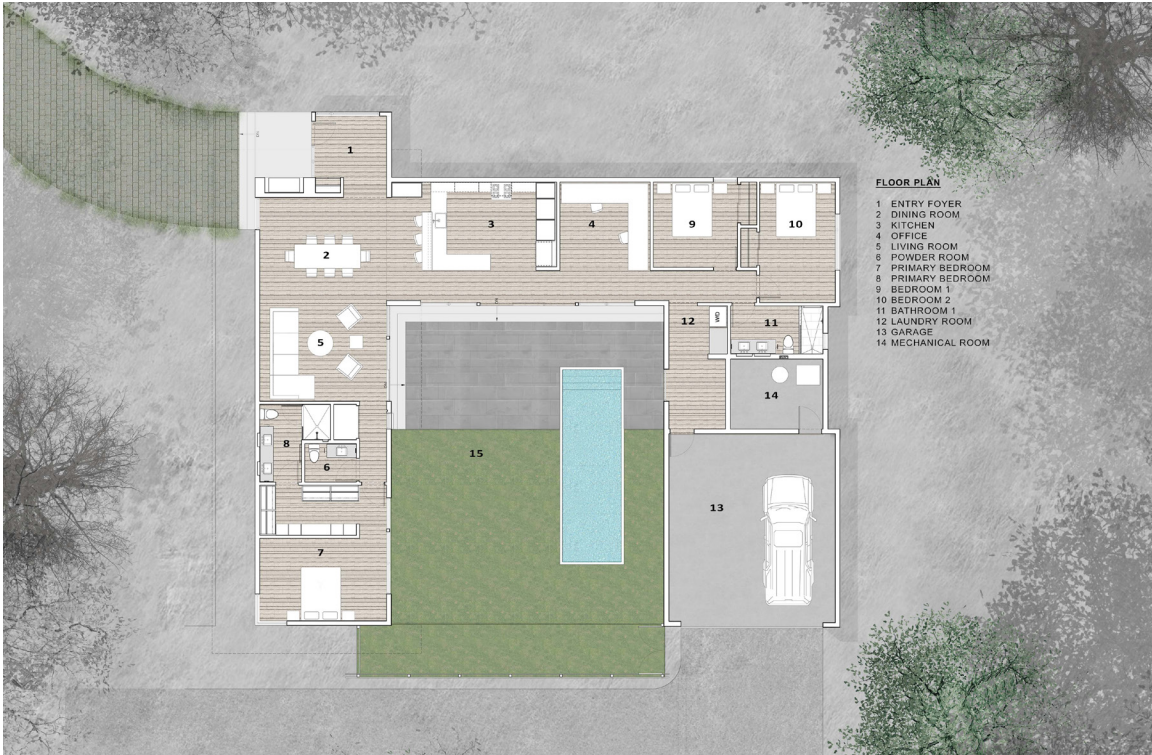
Building Section

0 1 2 4 8 16 (ft)



COURTYARD MODULAR

This single-story courtyard 2,600 SF courtyard house centers around a private and contained pool area ideal for a suburban or rural site. The efficiently planned three bedrooms, 2 1/2 bath house included an open kitchen, living and dining area, a home office and a commodious and architecturally integrated outdoor living area that expands the houses living area with a pool, court, and green area for comfortable living.

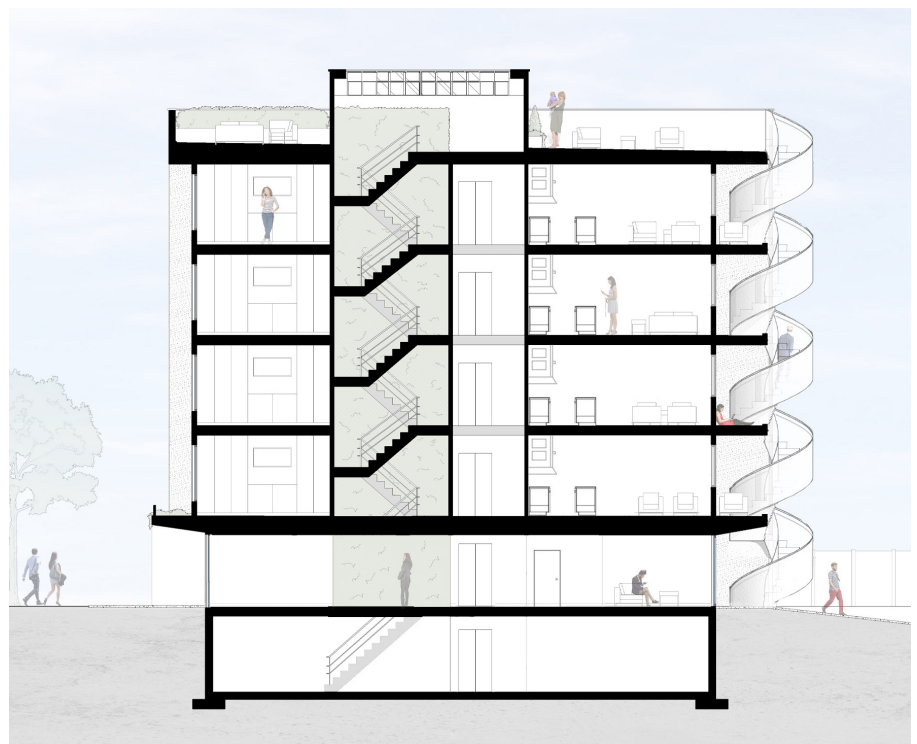
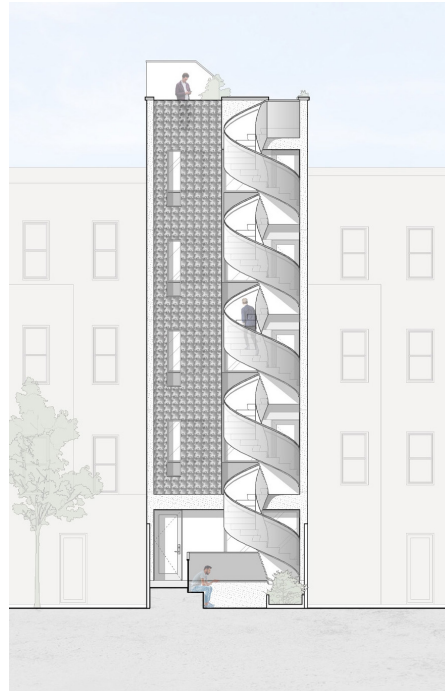


URBAN IN-FILL MODULAR LIVING

New York, NY

SPG has long explored modular construction as a cost-effective and environmentally sustainable means to achieve high-quality construction. Here, we bring our design sensibility to NYC's affordable housing crisis, inserting affordable housing units where pockets of urban blight currently mar the city's streets. Continuous streetscapes creates the opportunity for a vital urban social fabric, but increased density also generally means increased costs, which is mitigated by the factory-built construction methods used here. This small multi-family building is comprised of four 1-bedroom dwellings connected by vertical circulation core. The ground floor is designed for shared community facilities, with one module containing public services oriented toward the street, and the second containing residents' common area that is oriented toward the shared garden. The scheme maximizes FAR for the site but a modern curving and dynamic outdoor fire escape provides both egress and access to shared outdoor living areas at the garden and roof levels. Modern, well-conceived, well-designed, and affordable living spaces can enhance a broader demographic of NY citizens' quality of life.



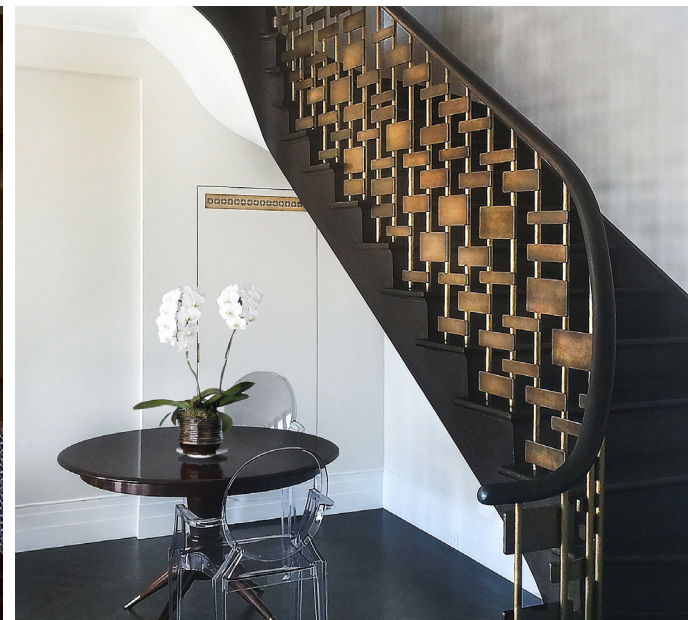




OTHER PROJECTS | COMMERCIAL

Since the firm's inception, SPG has worked with a range of clients seeking innovative and well-considered commercial projects. SPG has successfully brought thoughtful, well-executed designs to completion for our retail, hospitality, and corporate interior clients, including nationally recognized and boutique brands serving domestic and international markets. Innovative and cost-effective problem-solving coupled with brand creation and recognition give each of these projects a distinctive and memorable presence.

[SPG]
architects



OTHER PROJECTS | CITY LIVING

SPG's experience in residential renovations and construction begins with our origins in NYC, where private living spaces provide important relief to the cacophony of the urban environment. Our designs offer thoughtfully conceived interior and outdoor spaces that connect us to the urban locale while simultaneously providing a calming backdrop for our clients' private lives. Understanding the value of every square foot means that we maximize functionality and eliminate visual clutter, providing each of our clients with a unique sense of home.